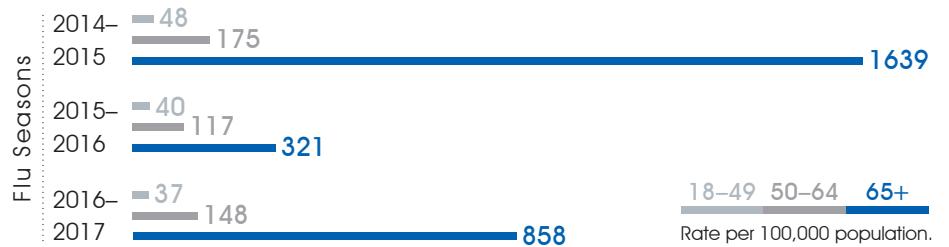


# THE IMPACT OF THE FLU IN ADULTS 65+

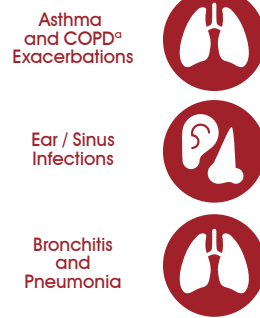
As we age, the immune system weakens.<sup>i, ii</sup> For this reason, adults 65 years of age and older are not as well protected from the flu by standard flu vaccines. This leaves them more vulnerable to infection and related complications.<sup>iii</sup>

Adults **65 years of age and older** experience higher rates of flu-related hospitalizations.<sup>iv</sup>



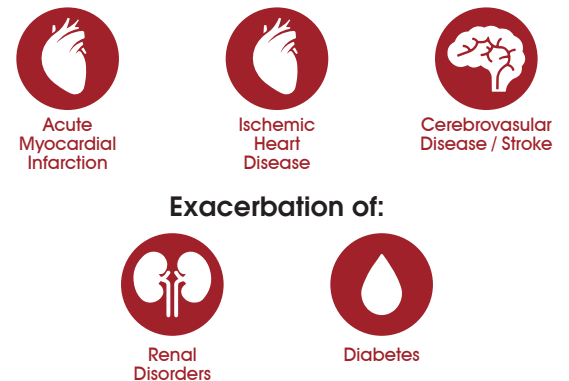
The flu can lead to direct complications, make chronic medical conditions more severe and cause serious health events, such as heart attacks.

## Direct Effects<sup>vii</sup>

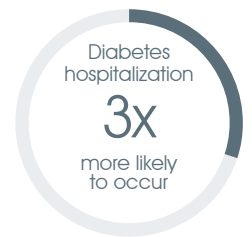
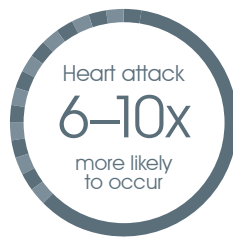


<sup>o</sup>COPD: Chronic Obstructive Pulmonary Disease

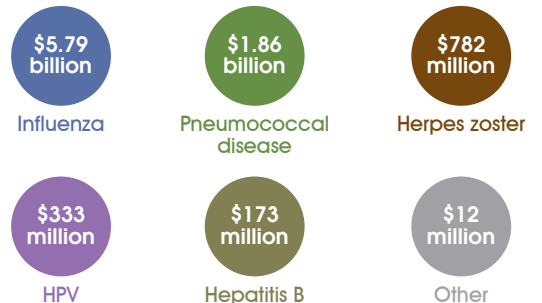
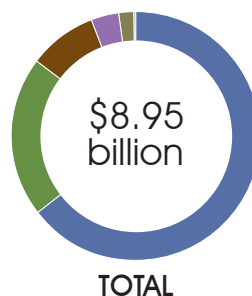
## Indirect Effects: Multi-Organ Systems<sup>vii, viii</sup>



Following a flu infection, there is an increased risk of heart attack, stroke and diabetes hospitalization.<sup>v, vi</sup>



The flu accounts for an estimated **65%** of the annual economic burden of adult vaccine-preventable diseases.<sup>vii</sup>



i. Aspinall R, Del Giudice G, Effros RB, Grubeck-Loebenstein B, Sambhara S. Challenges for vaccination in the elderly. *Immun Ageing*. 2007;4:9.  
 ii. Monto AS, Ansaldo F, Aspinall R, et al. Flu control in the 21st century: optimizing protection of older adults. *Vaccine*. 2009;27(37):5043-5053.  
 iii. Centers for Disease Control and Prevention (CDC). What You Should Know and Do This Flu Season If You Are 65 Years and Older. <http://www.cdc.gov/flu/about/disease/65over.htm>. Accessed on March 24, 2016.  
 iv. Thompson WW, et al. *J Infect Dis*. 2006;194(suppl 2):S82-S91.  
 v. Warren-Gash C, Blackburn R, Whitaker H, et al. Laboratory-confirmed respiratory infections as triggers for acute myocardial infarction and stroke: a self-controlled case series analysis of national linked datasets from Scotland. *Eur Respir J*. 2018;51:1-9. 1701794 [https://doi.org/10.1183/13993003.01794-2017].  
 vi. Hulme KD, Gallo LA, Short KR. Influenza virus and glycemic variability in diabetes: a killer combination? *Front Microbiol*. 2017;8(861):1-7.  
 vii. Ozawa S, et al. Return on investment from childhood immunizations in low- and middle-income countries, 2011-20. *Health Affairs*. 2016; 35(2):199-207. doi:10.1377/hlthaff.2015.1086.